

# Trumpetinsoiton asteikkoliite (SML 1991)

## Peruskurssi 1/3

Kari Karjalainen

Musical notation for the first section, Peruskurssi 1/3, measures 1-12. It consists of three staves of music in C major, 4/4 time. The first staff contains measures 1-4, the second staff contains measures 5-8, and the third staff contains measures 9-12. The music features a simple melodic line with some chromaticism in the later measures.

## Peruskurssi 2/3

Musical notation for the second section, Peruskurssi 2/3, measures 13-24. It consists of three staves of music. The first staff contains measures 13-16, the second staff contains measures 17-20, and the third staff contains measures 21-24. The key signature changes to B-flat major (two flats) at measure 17. The music is more rhythmic and includes some chromaticism.

## Peruskurssi 3/3

Musical notation for the third section, Peruskurssi 3/3, measures 25-36. It consists of three staves of music. The first staff contains measures 25-28, the second staff contains measures 29-32, and the third staff contains measures 33-36. The key signature changes to E-flat major (three flats) at measure 29. The music is highly rhythmic and features complex chromatic patterns.

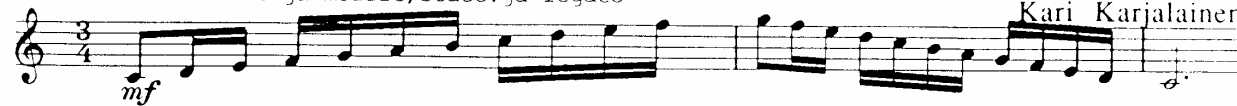


# I-Kurssi

♩ = 60

Fis-Des duurit ja mollit, stacc. ja legato

Kari Karjalainen



D-F-duurit ja mollit.

